

DEPARTMENT OF THE ARMY TECHNICAL MANUAL

DS, GS,
AND DEPOT MAINTENANCE REPAIR
PARTS AND SPECIAL TOOL LISTS
FILTER UNIT, GAS
PARTICULATE
M7A1 (FSN 4240-203-3999)



HEADQUARTERS, DEPARTMENT OF THE ARMY

NOVEMBER 1969

Changes in force: C1 and C2

CHANGE

NO. 2

HEADQUARTERS
DEPARTMENT OF THE ARMY
WASHINGTON, DC, 29 May 1990**TECHNICAL MANUAL
DIRECT SUPPORT, GENERAL SUPPORT, AND DEPOT MAINTENANCE
REPAIR PARTS AND SPECIAL TOOLS LISTS
FOR
FILTER UNIT, GAS-PARTICULATE, M7A1**

TM 3-4240-201-35P , 24 November 1969, is change as follows:

1. The purpose of this change is to update guidance for disposal, handling, and storage of filters.
2. Page 3, paragraph 3a(3) add the following recoverability code:
 - A. Item requires special handling or condemnation procedures because of specific reasons (e.g., precious metal content, high dollar value, critical material, or hazardous material). Refer to appropriate manuals/directives for specific instructions.
3. Page 7, Section II, Figure 5, Item 5 - in column (1) change SMR code from "-P-O--" to -P-O-A.
4. File this change sheet in front of the publication for reference purposes.

By Order of the Secretary of the Army:

CARL E. VUONO
*General, United States Army
Chief of Staff*

Official:

WILLIAM J. MEEHAN II
*Brigadier General, United States Army
The Adjutant General*

Distribution:

To be distributed in accordance with DA Form 12-28 (block 284), maintenance requirements for TM 3-4240-201-35P.

☆U.S. GOVERNMENT PRINTING OFFICE: 1990-743-049:20147

Change }
No. 1 }

HEADQUARTERS
DEPARTMENT OF THE ARMY
Washington, D. C. 14 April 1970

**DS, GS,
and Depot Maintenance Repair
Parts and Special Tool Lists
FILTER UNIT, GAS
PARTICULATE
M7A1 (FSN 4240-203-3999)**

TM 3-4240-201-35P, 24 November 1969, is changed as follows:

Page 18, Figure 3. Hose Assembly, Size 2:

Change item number 1 to 4.

Change item number 4 to 1.

By Order of the Secretary of the Army:

W. C. WESTMORELAND,
General United States Army,
Chief of Staff.

Official:

KENNETH G. WICKHAM,
Major General United States Army,
The Adjutant General

Distribution:

Active Army.

CNGB (1)
USAMB (2)
USAMC (5)
USAMUCOM (5)
USACDC (2)
USACDCCBRA (2)
USACDCADA (2)
USACDCARMA (2)
USACDCARTYA (2)
USACDCAVNA (2)
USACDCIA (2)
USACDCSWA (2)
USACDCEC (10)
USCONARC (10)
ARADCOM (5)
ARADCOM Rgn (5)
OS Maj Comd (5)
Armies (5)
Corps (3)
Div (3)
Regt/Bde (2)
Bn (2)
Co (2)

Instl (2) except
USAECFB (4)
USAFACFS (4)
USMA (10)
Svc Colleges (10)
Br Svc Sch (10) except
USACMLCS (50)
Gen Dep (5)
Dep (5)
Army Dep (5)
POE (1)
EAMTMTS (1)
WAMTMTS (1)
MOTBA (1)
MOTBY (1)
MOTKI (1)
MOTSU (1)
USAPC (2)
USAIC (2)
USA Msl & Muns Gen & Sch (2)
PG (5)
USAAPSA (5)
Arsenals (3) except
Edgewood (50)

ARNG: None.

USAR: None.

For explanation of abbreviations used, see AR 310-50.

☆U.S. GOVERNMENT PRINTING OFFICE: 1970-390-942/1770

**DS, GS, and Depot Maintenance
 Repair Parts and Special Tool Lists**

**FILTER UNIT, GAS PARTICULATE, M7A1
 (4240-203-3999)**

	Paragraph	Page	Figure No
SECTION I.	INTRODUCTION		
	Scope	1	2
	General	2	1
	Explanation of columns	3	
	Special information	4	
	How to locate repair parts	5	
	Abbreviations	6	
	Federal supply codes for manufacturers.....	7	
	Recommendations for maintenance publications improvements	8	
II.	REPAIR PARTS FOR DIRECT SUPPORT, GENERAL SUP- PORT AND DEPOT MAINTENANCE		
	Group 100. Headpiece	2	
	Group 200. Hose assemblies	3, 4	
	Group 300. Air purifier	5, 6	
	Group 400. Transformer	7	
	Group 500. Accessories	8	
	Group 600. Repair kit	8	
III.	SPECIAL TOOLS, TEST AND SUPPORT EQUIPMENT (Not applicable).		
IV.	FEDERAL STOCK NUMBER AND REFERENCE NUMBER INDEX-		

*This manual supersedes TM 3-4240-201-35P, 25 July 1958, including all changes.

SECTION I. INTRODUCTION

1. Scope

This manual lists repair parts, special tools, and special purpose test equipment required for the performance of direct support, general support, and depot maintenance of the Filter Unit, Gas Particulate, M7A1.

2. General

This repair parts and special tools list is divided into the following sections:

a. Repair Parts-Section II. A list of repair parts authorized for the performance of maintenance at the direct support, general support, and depot level in figure and item number sequence.

b. Special Tools, Test and Support Equipment-Section III. Not applicable.

c. Federal Stock Number and Reference Number Index-Section IV. A list of Federal stock numbers in ascending numerical sequence followed by a list of reference numbers in ascending alphanumeric sequence, cross-referenced to the illustration figure number and item number.

3. Explanation of Columns

The following provides an explanation of columns in the tabular lists in sections II and IV:

a. Source, Maintenance, and Recoverability

Codes (SMR) Column. (1) *Source codes indicate the selection status*

and source for the listed item. Source codes used are-

<i>Code</i>	<i>Explanation</i>
P-	Repair parts which are stocked in or supplied from the GSA-DSA, or Army supply system, and authorize for use at indicated maintenance categories.
P2-	Repair parts which are procured and stocked for insurance purposes because the combat or military essentiality of the end item dictates that a minimum quantity be available in the supply system.
P9-	Assigned to items which are NSA design controlled: unique repair parts, special tools, test, measuring and diagnostic equipment, which are stocked and supplied by the Army COMSEC logistic system, and which are not subject to the provisions of AR 380-41.
P10-	Assigned to items which are NSA design controlled: special tools, test, measuring and diagnostic equipment for COMSEC support, which are accountable under the provisions of AR 380-41, and which are stocked and supplied by the Army COMSEC logistic system.

<i>Code</i>	<i>Explanation</i>
M-	Repair parts which are not procured or stocked but are to be manufactured at indicated maintenance categories.
A-	Assemblies which are not procured or stocked as such but are made up of two or more units, each of which carry individual stock numbers and descriptions and are procured and stocked and can be assembled by units at indicated maintenance categories.
X-	Parts and assemblies which are not procured or stocked; the mortality of which normally is below that of the applicable end item; and the failure of which would result in retirement of the end item from the supply system.
X1-	Repair parts which are not procured or stocked, the requirement for which will be supplied by use of next higher assembly or component.
X2-	Repair parts which are not stocked The indicated maintenance category requiring such repair parts will attempt to obtain through cannibalization; if not obtainable through cannibalization, such repair parts will be requisitioned with supporting justification through normal channel.
G-	Major assemblies that are procured with PEMA funds for initial issue only to be used as exchange assemblies at DSU and GSU level These assemblies will not be stocked above DSU and GSU level or returned to depot supply level.

(2) Maintenance codes indicate the lowest category of maintenance authorized to install the listed item. The maintenance level codes are-

<i>Code</i>	<i>Explanation</i>
C	Crew or operator maintenance
O	Organizational maintenance
F	Direct support maintenance
H	General support maintenance
D	Depot maintenance

(3) Recoverability codes indicate whether unserviceable items should be returned for recovery or salvage. Items not coded are expendable. Recoverability codes are-

<i>Code</i>	<i>Explanation</i>
R-	Repair parts and assemblies which are economically repairable at DSU and GSU activities and normally ae furnished by supply on an exchange basis.
T-	High-dollar value recoverable repair parts which are subject to special handling and are issued on an exchange basis Such repair parts normally are repaired or overhauled at depot maintenance activities.

- | <i>Code</i> | <i>Explanation</i> |
|-------------|--|
| U- | Repair parts specifically selected for salvage by reclamation units because of precious metal content, critical materials, highdollar value reusable casings or castings. |
| S- | Repair parts and assemblies which are economically repairable at DSU and GSU activities and normally are furnished on an exchange basis. When determined to be uneconomically repairable by DSU and GSU activities, they will be returned to the depot for evaluation and analysis prior to final disposition. |
| | <i>b. Federal Stock Number, Column 2.</i> This column indicates the Federal stock number assigned to the item and will be used for requisitioning purposes. |
| | <i>d. Unit of Measure (U/M), Column 4.</i> A two-character alphabetic abbreviation indicating the amount or quantity of the item upon which the allowances are based, e.g., ft, ea, pr, etc. |
| | <i>e. Quantity Incorporated in Unit, Column 5.</i> This column indicates the quantity of the item used in the functional group or the assembly group. |
| | <i>f. 30-Day DS/GS Maintenance Allowance, Columns 6 and 7.</i> |

NOTE.

Allowances in GS column are for GS maintenance only.

- (1) The allowance columns are divided into three subcolumns. Indicated in each subcolumn, opposite the first appearance of each item, is the total quantity of items authorized for the number of equipments supported. Subsequent appearances of the same item will have the letters "REF" in the applicable allowances column. Items authorized for use as required but not for initial stockage are identified with an asterisk in the allowance column.
- (2) The quantitative allowances for DS/GS levels of maintenance will represent initial stockage for a 30-day period for the number of equipments supported.
- (3) Determination of the total quantity of parts required for maintenance of more than 100 of these equipments can be accomplished by converting the equipment quantity to a decimal factor by placing a decimal point before the next to last digit of the number to indicate hundredths, and multiplying the decimal factor by the parts quantity authorized in the 51-100 allowance column. Example, authorized allowance for 51-100 equipments is 40; for 150 equipments multiply 40 by 1.50 or 60 parts required.

g. One-Year Allowances per 100 Equipments/Contingency Planning Purposes, Column 8. This column indicates opposite the first appearance of each item the total quantity required for distribution and contingency planning purposes. The range of items indicates total quantities of all authorized items required to provide for adequate support of 100 equipments for one year.

h. Depot Maintenance Allowance Per 100 Equipments, Column 9. This column indicates opposite the first appearance of each item, the total quantity authorized for depot maintenance of 100 equipments. Subsequent appearances of the same item will have the letters "REF" in the allowance column. Items authorized for use but not for initial stockage are identified with an asterisk in the allowance column.

i. Illustration, Column 10. This column is divided as follows:

- (1) Figure number column 10a indicates the figure number of the illustration in which the item is shown.
- (2) Item number column 10b indicates the callout number used to reference the item in the illustration.

4. Special Information

- a.* Parts which require manufacture or assembly at a category higher than that authorized for installation will indicate in the source column the higher category.
- b.* Action change codes indicated in the left-hand margin of the listing page denote the following:
 - N-Indicates an added item not included in previous publication.
 - C-Indicates a change in data.
 - F-Indicates a change in FSN only.
- c.* The following publications pertain to the Filter Unit, Gas Particulate, M7A1

TM 3-4240-201-12	Operator and Organizational Maintenance Manual
TM 3-4240-201-20P	Organizational Maintenance Repair Parts and Special Tool Lists
TM 3-4240-201-35	Direct Support, General Support, and Depot Maintenance Manual

5. How to Locate Repair Parts

a. When Federal stock number or reference number is unknown-

(1) Using the table of contents, determine the functional group, functional subgroup, or assembly group, i.e., headpiece, hoses, transformer, etc, within which the repair part belongs. This is necessary since illustrations are prepared for functional group or functional subgroups and listings are divided into the same groups.

(2) Find the illustration covering the functional group or functional subgroup to which the repair part belongs.

(3) Identify the repair part on the illustration and note the illustration figure and item number of the repair part.

(4) Using the repair parts listing, find the functional group or functional subgroup to which the repair part belongs and locate the illustration figure and item number noted on the illustration.

b. When Federal stock number or reference number is known-

(1) Using the index of Federal stock numbers and reference numbers, find the pertinent Federal stock number or reference number. This index is in ascending FSN sequence followed by a list of reference numbers in ascending alphanumeric sequence, cross-referenced to the illustration figure number and item number.

(2) Using the repair parts listing, find the functional group or functional subgroup of the repair part and the illustration figure number and item number referenced in the index of Federal stock numbers and reference numbers.

6. Abbreviations

<i>Abbreviation</i>	<i>Explanation</i>
ac	alternating current
al	aluminum
aly	alloy
amp	ampere
assy	assembly
AWG	American wire gauge
CFM	Cubic feet per minute
cn	can
dc	direct current
deg	degree
dia	diameter
ea	each
ext	external
ft	foot /feet
hex	hexagon
hd	head
id	inside diameter
in	inch

<i>Abbreviation</i>	<i>Explanation</i>
lg	long/length
mach	machine
max	maximum
med	medium
NC	American national coarse thread
NF	American national fine thread
nom	nominal
od	outside diameter
pltd	plated
rl	roll
rt	right
st	single throw
stl	steel
UNC	Unified coarse thread
v	volt
wd	wide/width
yd	yard

7. Federal Supply Code for Manufacturers

<i>Code</i>	<i>Manufacturer</i>
08288.....	Military Supply Standards
25472.....	B. F. Goodrich Company 500 South Main Street Akron, Ohio 44318
76545.....	Mueller Electric Company 1583 East 31st Street Cleveland, Ohio 44114
80205.....	National Aerospace Standards Committee, Aeronautical Industries Association of America Washington, D. C.
81348.....	Federal Specifications
81349.....	Military Specifications
81361.....	Edgewood Arsenal Edgewood Arsenal, Md. 21010
81895.....	Perfecting Service Company Breco Division 332 Atando Street Charlotte, N.C. 28205
82415.....	Price Electric Corporation 5560 Church Street Frederic, Md 21701
83315.....	Hubbel Corporation 407 E. Hawly Street Mundelein, Ill 60060
95138.....	Perfecting Service Company Charlotte, N.C. 28205
96906	Military Standards

8. Recommendations for Maintenance Manual Improvements

Reporting of errors, omissions, and recommendations for improving this manual by the individual user is encouraged. Reports should be submitted on DA Form 2028 (Recommended Changes to Publications) and forwarded direct to Commanding Officer, Edgewood Arsenal,- ATTN: SMUEA-TSE-TPL, Edgewood Arsenal, Md. 21010

SECTION II
REPAIR PARTS FOR DIRECT SUPPORT, GENERAL SUPPORT, AND DEPOT MAINTENANCE

(1) SMR CODE	(2) FEDERAL STOCK NUMBER	(3) DESCRIPTION <i>Reference Number & Mfr Code Usable On Code</i>	(4) UNIT OF MEAS	(5) QTY INC IN UNIT	(6) 30 DAYS DS MAINT ALLOWANCE			(7) 30 DAYS GS MAINT ALLOWANCE			(8) 1-YR ALW PER 100 EQUIP CNTGCV	(9) DEPOT MAINT ALW PER 100 EQUIP	(10) ILLUSTRATION		
					(a) 1-20	(b) 21-50	(c) 51-100	(a) 1-20	(b) 21-50	(c) 51-100			(a) FIGURE NO.	(b) ITEM NO.	
		GROUP 100 - HEADPIECE													
N	-P-O--	4240-368-6361	CARRIER, HEADPIECE, HOSPITAL, PROTECTOR, M12 D5-4-1002 (81361)	ea	6	3	8	14	*	*	*	144	60	2	1
N	-P-O--	4240-763-2464	HEADPIECE, HOSPITAL COLLECTIVE PROTECTOR, M13A1 D5-70-23 (81361)	ea	6	18	42	85	*	*	*	1100	60	2	2
		GROUP 200 - HOSE ASSEMBLIES													
	-A-O--		HOSE ASSEMBLY, size 2, 6 ft lg C5-66-269 (81361)	-	6	-	-	-	-	-	-	-	-	3	-
C	-P-O--	4730-392-2974	PLUG, PULOMATIC, al aly 56AT (95138)	ea	1	*	*	*	*	*	*	5	80	3	1
C	-P-O--	4730-554-7208	CLAMP, RATCHET, 1-1/2 id to 1-1/4 od, 5 per can NAS 397-20 (80205)	ea	2	*	*	*	*	*	*	5	160	3	2
C	-P-O--	4720-279-0093	HOSE, AIR DUCT, 6 ft lg C5-19-916 (81361)	ea	1	4	10	19	*	*	*	186	100	3	3
C	-P-O--	4730-392-2962	ADAPTER, INLET, al aly C5-66-232 (81361)	ea	1	*	*	*	*	*	*	5	5	3	4
	-A-O--		HOSE ASSEMBLY, size 3, 9 ft lg C5-66-230 (81361)	-	2	-	-	-	-	-	-	-	-	4	
C	-P-O--	4730-392-2974	PLUG, PULOMATIC, al aly 56AT (95138)	ea	1	REF	REF	REF	REF	REF	REF	REF	REF	4	1

SECTION II
REPAIR PARTS FOR DIRECT SUPPORT, GENERAL SUPPORT, AND DEPOT MAINTENANCE

(1) SMR CODE	(2) FEDERAL STOCK NUMBER	(3) DESCRIPTION <i>Reference Number & Mfr Code Usable On Code</i>	(4) UNIT OF MEAS	(5) QTY INC IN UNIT	(6) 30 DAYS DS MAINT ALLOWANCE			(7) 30 DAYS GS MAINT ALLOWANCE			(8) 1-YR ALW PER 100 EQUIP CNTGCTY	(9) DEPOT MAINT ALW PER 100 EQUIP	(10) ILLUSTRATION		
					(a)	(b)	(c)	(a)	(b)	(c)			(a) FIGURE NO.	(b) ITEM NO.	
					1-20	21-50	51-100	1-20	21-50	51-100					
C	-P-O--	4730-554-7208	CLAMP, RATCHET, 1-1/8 id to 1-1/4 od, 5 per can NAS 397-20 (80205)	ea	2	REF	REF	REF	REF	REF	REF	REF	4	2	
C	-P-O--	4720-279-0094	HOSE, AIR DUCT, 9 ft lg C5-19-916 (81361)	ea	1	2	4	8	*	*	*	72	35	4	3
F	-P-O--	4730-886-9339	"Y" FITTING AND SOCKET 1015YHS12C (81895)	ea	1	*	*	*	*	*	*	5	5	4	4
GROUP 300 - AIR PURIFIER															
N	-A-O--		PURIFIER, AIR ASSEMBLY, M2A2 D5-19-1772 (81361)	-	1	-	-	-	-	-	-	-	-	5	-
N	-P-O--	4240-763-2465	CAP, AIR FLOW CONTROL C5-19-1827 (81361)	ea	4	4	10	19	*	*	*	200	70	5	1
C	-P-O--	5305-984-6195	SCREW, MACHINE cres, No. 8 32 NC-2A x 3/4 lg MS35206-247 (96906)	ea	4	*	*	*	*	*	*	5	40	5	2
F	-P-O--	5310-045-3299	WASHER, LOCK steel, No. 8 MS35338-42 (96906)	ea	4	*	*	*	*	*	*	5	80	5	3

SECTION II
REPAIR PARTS FOR DIRECT SUPPORT, GENERAL SUPPORT, AND DEPOT MAINTENANCE

(1) SMR CODE	(2) FEDERAL STOCK NUMBER	(3) DESCRIPTION <i>Reference Number & Mfr Code Usable On Code</i>	(4) UNIT OF MEAS	(5) QTY INC IN UNIT	(6) 30 DAYS DS MAINT ALLOWANCE			(7) 30 DAYS GS MAINT ALLOWANCE			(8) 1-YR ALW PER 100 EQUIP CNTGCTY	(9) DEPOT MAINT ALW PER 100 EQUIP	(10) ILLUSTRATION		
					(a)	(b)	(c)	(a)	(b)	(c)			(a) FIGURE NO.	(b) ITEM NO.	
					1-20	21-50	51-100	1-20	21-50	51-100					
N	P-O--	4240-018-3079	MANIFOLD ASSEMBLY C5-19-1773 (81361)	ea	1	*	*	*	*	*	*	5	10	5	4
C	-P-O--	4240-289-7978	FILTER, GAS, 12 CFM, M12A1 C5-19-2269 (81361)	ea	1	6	14	27	*	*	*	300	10	5	5
C	-P-O--	4240-368-6291	FILTER, PARTICULATE, 12 CFM, M13 C5-19-853 (81361)	ea	1	6	14	27	*	*	*	300	10	5	6
N	-P-H--	5305-879-3825	SCREW, TAPPING steel, No. 4 size x 1/4 lg MS24617-1 (96906)	ea	4	-	-	-	*	*	*	5	40	5	7
N	X2-H--		NAMEPLATE, AIR PURIFIER, M2A2 COMPONENT OF FILTER UNIT, GAS PARTICULATE, 12 CFM, ABC-M8A3 C5-19-1775-1 (81361)	-	1	-	-	-	-	-	-	-	-	5	8
N	-P-O--	4240-806-0022	CLIP, SPRING C5-19-1662 (81361)	ea	1	2	5	10	*	*	*	100	15	5	9
N	* -P-O-R	4240-807-6858	PRECLEANER AND HOUSING ASSY D5-19-1785 (81361)	ea	1	*	*	*	*	*	*	5	5	5	10
C	-P-H--	5305-889-3000	SCREW, MACHINE, steel, No. 6-32 UNC- 2A x 1/2 lg MS35206-230 (96906)	ea	4	-	-	-	*	*	*	5	40	6	1
C	-P-H--	5310-209-0788	WASHER, LOCK steel, No. 6 size MS35335-30 (96906)	ea	4	-	-	-	*	*	*	5	40	6	2

SECTION II
REPAIR PARTS FOR DIRECT SUPPORT, GENERAL SUPPORT, AND DEPOT MAINTENANCE

(1) SMR CODE	(2) FEDERAL STOCK NUMBER	(3) DESCRIPTION <i>Reference Number & Mfr Code Usable On Code</i>	(4) UNIT OF MEAS	(5) QTY INC IN UNIT	(6) 30 DAYS DS MAINT ALLOWANCE			(7) 30 DAYS GS MAINT ALLOWANCE			(8) 1-YR ALW PER 100 EQUIP CNTGCTY	(9) DEPOT MAINT ALW PER 100 EQUIP	(10) ILLUSTRATION		
					(a)	(b)	(c)	(a)	(b)	(c)			(a) FIGURE NO.	(b) ITEM NO.	
					1-20	21-50	51-100	1-20	21-50	51-100					
C	-P-H--	5305-059-4568	SCREW, MACHINE steel, No. 8-32 UNC-2A x 1/2 lg MS35190-253 (96906)	ea	6	-	-	-	*	*	*	5	320	6	3
C	-P-H--	5310-934-9757	NUT, PLAIN, HEXAGON steel, No. 8-32 UNC-2B MS135649-282 (96906)	ea	6	-	-	-	*	*	*	5	360	6	4
C	-P-H--	5310-596-7693	WASHER, LOCK steel, No. 8 size MS35335-31 (96906)	ea	6	-	-	-	*	*	*	5	60	6	5
C	X2-H--	4240-300-5714	PLATE, END C5-19-933 (81361)		1	-	-	-	-	-	-	-	-	6	6
C	-P-H--	5325-270-8890	GROMMET, RUBBER 2 per bag MS35489-22 (96906)	ea	2	-	-	-	*	*	*	5	200	6	7
C	-P-H--	4240-319-5046	PRECLEANER, AIR PURIFIER, M1A1 D5-19-2258 (81361)	ea	1	-	-	-	*	*	*	5	10	6	8
C	-P-H--	5305-989-7435	SCREW, MACHINE steel, No. 10-32 UNF-2A x 5/8 lg MS35207-264 (96906)	ea	4	-	-	-	*	*	*	5	40	6	9
C	-P-H--	5305-889-2997	SCREW, MACHINE steel, cad pltd, No. 4-40 UNC-2A x 3/8 lg MS35206-215 (96906)	ea	4	-	-	-	*	*	*	5	40	6	10

SECTION II
REPAIR PARTS FOR DIRECT SUPPORT, GENERAL SUPPORT, AND DEPOT MAINTENANCE

(1) SMR CODE	(2) FEDERAL STOCK NUMBER	(3) DESCRIPTION <i>Reference Number & Mfr Code Usable On Code</i>	(4) UNIT OF MEAS	(5) QTY INC IN UNIT	(6) 30 DAYS DS MAINT ALLOWANCE			(7) 30 DAYS GS MAINT ALLOWANCE			(8) 1-YR ALW PER 100 EQUIP CNTGCV	(9) DEPOT MAINT ALW PER 100 EQUIP	(10) ILLUSTRATION		
					(a)	(b)	(c)	(a)	(b)	(c)			(a) FIGURE NO.	(b) ITEM NO.	
					1-20	21-50	51-100	1-20	21-50	51-100					
C	-P-H--	5310-934-9739	NUT, PLAIN, HEXAGON steel, No. 4-40 UNC-2B MS35649-242 (96906)	ea	4	-	-	-	*	*	*	5	40	6	11
C	-P-H--	5310-616-3554	WASHER, LOCK flat, ext tooth, No. 4 size MS 35335-29 (96906)	ea	4	-	-	-	*	*	*	5	40	6	12
F	-P-H--	5940-689-8130	TERMINAL, LUG crimp, copper for 16-14 AWG size to accommodate No. 4 stud MS20659-39 (96906)	ea	1	-	-	-	*	*	*	5	10	6	13
C	-P-H--	5935-988-3552	CONNECTOR, ELECTRIC RECEPTACLE MS3102R12-5P (96906)	ea	1	-	-	-	*	*	*	5	10	6	14
C	X2-H--		CUP SWITCH C5-19-900 (81361)	-	1	-	-	-	-	-	-	-	-	6	15
C	X1----		NUT, BLIND RIVET - No. 6-32 NC-2B x 1/2 lg 56-106 (25472)	-	-	-	-	-	-	-	-	-	-	6	16
C	-P-H--	5970-556-2710	INSULATION, SLEEVING, ELECTRIC MIL-1-631 (81349)	in.	1	-	-	-	*	*	*	5	190	6	17
C	-P-H--	5305-017-1589	SCREW, TAPPING rd hd, steel No. 12-24 thd x 1/2 lg FF-S-107 (81348)	ea	6	-	-	-	*	*	*	5	60	6	18

SECTION II
REPAIR PARTS FOR DIRECT SUPPORT, GENERAL SUPPORT, AND DEPOT MAINTENANCE

(1) SMR CODE	(2) FEDERAL STOCK NUMBER	(3) DESCRIPTION <i>Reference Number & Mfr</i> <i>Code Usable On Code</i>	(4) UNIT OF MEAS	(5) QTY INC IN UNIT	(6) 30 DAYS DS MAINT ALLOWANCE			(7) 30 DAYS GS MAINT ALLOWANCE			(8) 1-YR ALW PER 100 EQUIP CNTGCTY	(9) DEPOT MAINT ALW PER 100 EQUIP	(10) ILLUSTRATION		
					(a) 1-20	(b) 21-50	(c) 51-100	(a) 1-20	(b) 21-50	(c) 51-100			(a) FIGURE NO.	(b) ITEM NO.	
C	-P-H--	5310-209-0786	WASHER, LOCK flat, steel 1/4 nom size MS35335-33 (96906)	ea	6	-	-	-	*	*	*	5	60	6	19
C	X2-H--	4240-300-5718	PLATE, MOUNTING C5-19-877 (81361)	-	1	-	-	-	-	-	-	-	-	6	20
C	-P-H--	5305-012-1742	SCREW, MACHINE steel, No. 12-24 UNC-2A x 1/2 lg FF-S-92 (81348)	ea	3	-	-	-	*	*	*	5	30	6	21
c	-P-H--	5310-821-6269	WASHER, LOCK flat, 1/4 size MS35334-19 (96906)	ea	3	-	-	-	*	*	*	5	30	6	22
C	-P-H--	4240-510-0325	FAN, CENTRIFUGAL D5-19-2260 (81361)	ea	1	-	-	-	*	*	*	5	10	6	23
C	-P-H--	4240-395-2054	SEPARATOR, DUST D5-19-967 (81361)	ea	1	-	-	-	*	*	*	5	10	6	24
C	-P-H--	5330-290-9814	GASKET, FIBER A19-906 (81361)	ea	1	-	-	-	*	*	*	5	100	6	25
C	-P-O--	5330-543-3174	SEAL, RUBBER 2 per bag A5-19-901 (81361)	ea	2	*	*	*	*	*	*	5	200	6	26
C	X2-H--	4240-391-0999	HOUSING ASSEMBLY, AIR PURIFIER D5-19-881 (81361)	-	1	-	-	-	-	-	-	-	-	6	27

SECTION II
REPAIR PARTS FOR DIRECT SUPPORT, GENERAL SUPPORT, AND DEPOT MAINTENANCE

(1) SMR CODE	(2) FEDERAL STOCK NUMBER	(3) DESCRIPTION <i>Reference Number & Mfr</i> <i>Code Usable On Code</i>	(4) UNIT OF MEAS	(5) QTY INC IN UNIT	(6) 30 DAYS DS MAINT ALLOWANCE			(7) 30 DAYS GS MAINT ALLOWANCE			(8) 1-YR ALW PER 100 EQUIP CNTGCV	(9) DEPOT MAINT ALW PER 100 EQUIP	(10) ILLUSTRATION		
					(a)	(b)	(c)	(a)	(b)	(c)			(a) FIGURE NO.	(b) ITEM NO.	
					1-20	21-50	51-100	1-20	21-50	51-100					
N	-P-H--	5320-582-3494	RIVET, BLIND al alloy, 1/8 dia MS20600AD4-W4 (96906)	ea	8	*	*	*	*	*	*	5	80	6	28
F	-P-H--	5310-834-4875	NUT, SELF LOCKING plate, rt angle, steel No. 10-32 NF-33 NAS 1033N3 (80205)	ea	4	-	-	-	*	*	*	5	40	6	29
F	-P-H--	5310-063-5997	NUT, BLIND RIVET flat hd open end, keyed steel, No. 10-32 UNF-3 BX 531 lg MS27130-19K (96906)	ea	1	-	-	-	*	*	*	5	10	6	30
C	-P-H--	5305-990-6444	SCREW, MACHINE steel, No. 10-32 UNF-2A 3/8 lg MS35207-261 (96906)	ea	1	-	-	-	*	*	*	5	10	6	31
C	-P-H--	5310-596-7691	WASHER, LOCK steel, No. 10 size MS35335-32 (96906)	ea	1	-	-	-	*	*	*	5	10	6	32
C	X2-H--	4240-391-0998	DEFLECTOR, AIR B5-19-867 (81361)	-	1	-	-	-	-	-	-	-	-	6	33
			GROUP 400 - TRANSFORMER												
C	-P-O-S	5950-338-6692	TRANSFORMER UNIT E5-66-274 (81361)	ea	1		2	2	3	*	*	*	25	10	7
	-P-H--	5935-201-2503	CONNECTOR PLUG, ELECTRICAL MSS5935-02 (08288)	ea	1	-	-	-	*	*	*	5	10	7	1

SECTION II
REPAIR PARTS FOR DIRECT SUPPORT, GENERAL SUPPORT, AND DEPOT MAINTENANCE

(1) SMR CODE	(2) FEDERAL STOCK NUMBER	(3) DESCRIPTION <i>Reference Number & Mfr Code Usable On Code</i>	(4) UNIT OF MEAS	(5) QTY INC IN UNIT	(6) 30 DAYS DS MAINT ALLOWANCE			(7) 30 DAYS GS MAINT ALLOWANCE			(8) 1-YR ALW PER 100 EQUIP CNTGCTY	(9) DEPOT MAINT ALW PER 100 EQUIP	(10) ILLUSTRATION		
					(a) 1-20	(b) 21-50	(c) 51-100	(a) 1-20	(b) 21-50	(c) 51-100			(a) FIGURE NO.	(b) ITEM NO.	
C	-P-H--	5970-556-2710	INSULATION, SLEEVING MIL-1-631 (81349)	ft	18 ln.	-	-	-	REF	REF	REF	REF	REF	7	2
F	-P-H--	5935-240-0173	CLAMP, CABLE, ELECTRICAL CONNECTOR MS3057-4A (96906)	ea	1	-	-	-	*	*	*	5	10	7	3
C	-P-H--	5305-984-4983	SCREW, MACHINE, steel, pltd, pan hd No. 6-32 UNC-2B x 1/4 lg MS35206-226 (96906)	ea	4	-	-	-	*	*	*	5	40	7	4
C	-P-H--	5945-321-9229	RELAY 2100 (82415)	ea	1	-	-	-	2	2	3	25	10	7	5
C	-P-H--	5305-984-6192	SCREW, MACHINE, steel, pltd, pan hd, No. 8-32 UNC-2A x 7/16 lg M535206-244 (96906)	ea	4	-	-	--	*	*	*	5	40	7	6
C	-P-H--	5310-809-8544	WASHER, FLAT, steel, pltd, No. 8 screw size MS27183-7 (96906)	ea	4	-	-	-	*	*	*	5	40	7	7
C	-P-H--	5310-045-3299	WASHER, LOCK, steel, pltd, split, No. 8 screw size MS35338-42 (96906)	ea	4	-	-	-	REF	REF	REF	REF	REF	7	8
C	-P-H--	5310-934-9757	NUT, PLAIN, hex, steel, pltd, No. 8-32 UNC-2B MS35649-282 (96906)	ea	4	-	-	-	REF	REF	REF	REF	REF	7	9

SECTION II
REPAIR PARTS FOR DIRECT SUPPORT, GENERAL SUPPORT, AND DEPOT MAINTENANCE

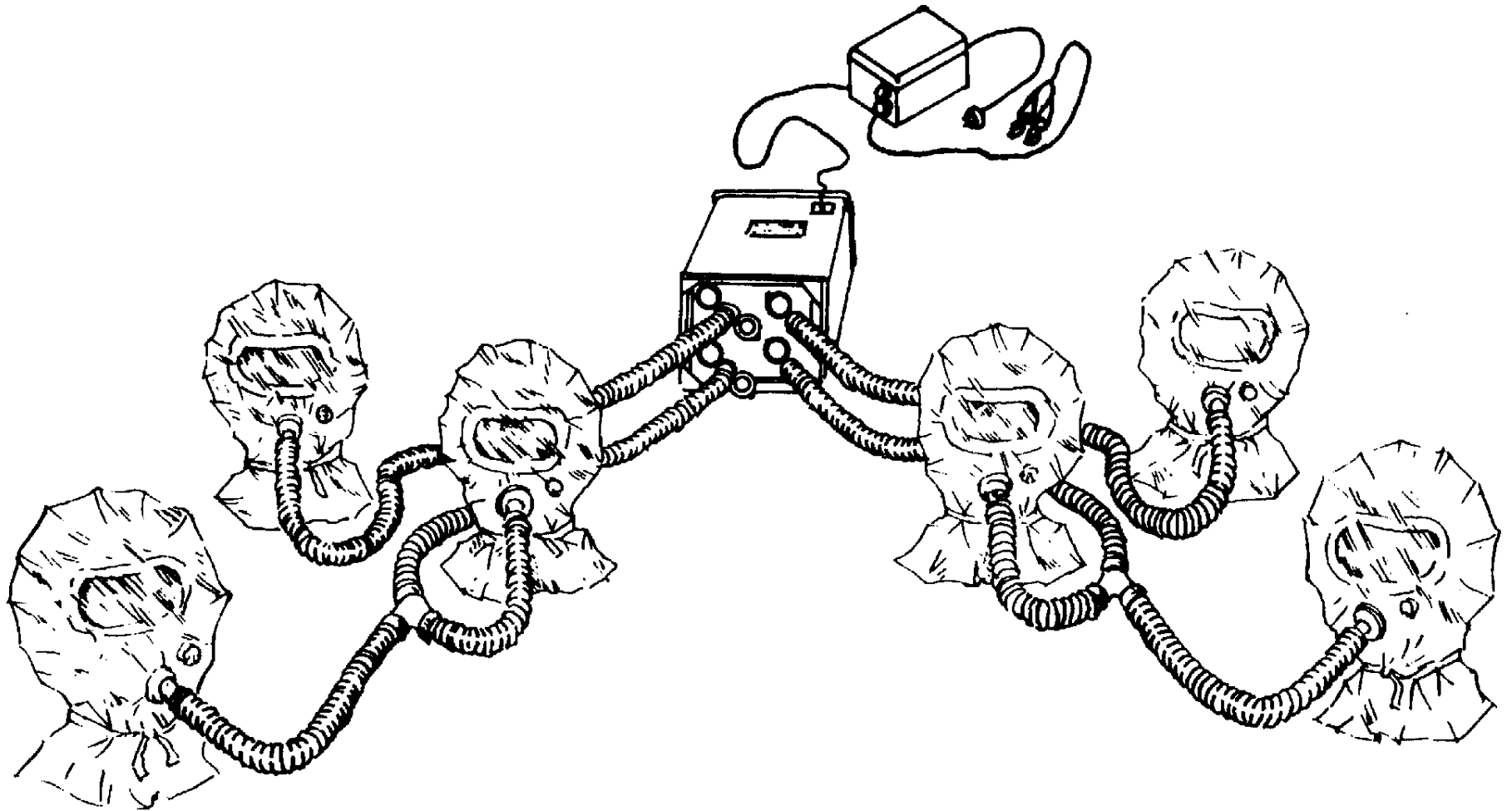
(1) SMR CODE	(2) FEDERAL STOCK NUMBER	(3) DESCRIPTION <i>Reference Number & Mfr Code Usable On Code</i>	(4) UNIT OF MEAS	(5) QTY INC IN UNIT	(6) 30 DAYS DS MAINT ALLOWANCE			(7) 30 DAYS GS MAINT ALLOWANCE			(8) 1-YR ALW PER 100 EQUIP CNTGCV	(9) DEPOT MAINT ALW PER 100 EQUIP	(10) ILLUSTRATION		
					(a)	(b)	(c)	(a)	(b)	(c)			(a) FIGURE NO.	(b) ITEM NO.	
					1-20	21-50	51-100	1-20	21-50	51-100					
C	-P-H--	5950-646-1172	TRANSFORMER, POWER, STEPDOWN, 115 v ac Input, 30 v, 3 amp output B5-66-276 (81361)	ea	1	-	-	-	2	2	3	25	10	7	10
C	X2-H--		COVER, TRANSFORMER (No Reference)	-	1	-	-	-	-	-	-	-	-	7	11
C	-P-H--	5305-993-1849	SCREW, MACH, steel, pltd, pan hd, No. 10-32 NF-2A x 1/4 lg MS35207-259 (96906)	ea	4	-	-	-	*	*	*	5	40	7	12
	-P-H--	6145-174-1107	WIRE, ELECTRICAL, INSULATED, stranded, No. 16 AWG, single conductor, black MIL-C-3432 (81349)	ft	9 in.	-	-	-	*	*	*	5	90	7	13
C	-P-H--	5930-655-1576	SWITCH, TOGGLE, 3 pole, st MS25105-24 (96906)	ea	1	-	-	-	2	3	5	50	10	7	14
C	-P-H--	5305-984-4992	SCREW, MACH, steel, pltd, pan hd, No. 6-32 NC-2A x 3/4 lg MS 35206-232 (96906)	ea	2	-	-	-	*	*	*	5	20	7	15
C	X2-H--		CASE, TRANSFORMER (No Reference)	-	1	-	-	-	-	-	-	-	-	7	16
C	-P-O--	5935-258-9010	CONNECTOR, PLUG, ELECTRICAL 2 contacts, male, 15 amp 250 v, ac-dc 9940 (83315)	ea	1	2	2	3	*	*	*	25	10	7	17

SECTION II
REPAIR PARTS FOR DIRECT SUPPORT, GENERAL SUPPORT, AND DEPOT MAINTENANCE

(1) SMR CODE	(2) FEDERAL STOCK NUMBER	(3) DESCRIPTION <i>Reference Number & Mfr Code Usable On Code</i>	(4) UNIT OF MEAS	(5) QTY INC IN UNIT	(6) 30 DAYS DS MAINT ALLOWANCE			(7) 30 DAYS GS MAINT ALLOWANCE			(8) 1-YR ALW PER 100 EQUIP CNTGCTY	(9) DEPOT MAINT ALW PER 100 EQUIP	(10) ILLUSTRATION		
					(a) 1-20	(b) 21-50	(c) 51-100	(a) 1-20	(b) 21-50	(c) 51-100			(a) FIGURE NO.	(b) ITEM NO.	
C	P-H--	6145-643-0018	CABLE, POWER, ELECTRICAL, 2 conductors in s, 300 v, No. 16 AWG, Type II MIL-C-12046 (81349)	ft	2	-	-	-	*	*	*	5	120	7	18
C	-P-O--	5975-281-0034	CABLE NIPPLE, ELECTRICAL, PLASTIC, flexible, 4 in. lg, red 26 (76545)	ea	2	2	3	5	*	*	*	50	20	7	19
C	-P-O--	5940-204-8350	CLIP, ELECTRICAL, battery, uninsulated, 50 amp, 3 in. max lg, Type PC W-C-440 (81348)	ea	2	2	3	5	*	*	*	50	20	7	20
C	-P-O--	5970-188-5477	INSULATION TAPE, ELECTRICAL, PLASTIC, black, adhesive, 0.750 in. wd x 0.10 thk x 36 yd roll MI L-T-7798 (81349)	rl	v	*	*	*	*	*	*	5	5	7	21
	-P-H--	5975-538-3136	BUSHING, ELECTRICAL CONDUIT, 3 per can MSS5975-19 (08288)	ea	3	-	-	-	*	*	*	5	30	7	22
F	-P-H--	5975-152-1127	BOX CONNECTOR, ELECTRICAL STYLE, 90 deg, for 3/8 in. conduit MSS5975-10 (08288)	ea	3	-	-	-	*	*	*	5	30	7	23
			GROUP 500 - ACCESSORIES												
C	-P-O--	5305-059-4568	SCREW, MACHINE, pan hd, cross recess, stl, pltd, No. 8-32 UNC-2A x 1/2 lg MS35190-253 (96906)	ea	26	REF	REF	REF	REF	REF	REF	REF	REF	8	1

**SECTION II
REPAIR PARTS FOR DIRECT SUPPORT, GENERAL SUPPORT, AND DEPOT MAINTENANCE**

(1) SMR CODE	(2) FEDERAL STOCK NUMBER	(3) DESCRIPTION <i>Reference Number & Mfr Code Usable On Code</i>	(4) UNIT OF MEAS	(5) QTY INC IN UNIT	(6) 30 DAYS DS MAINT ALLOWANCE			(7) 30 DAYS GS MAINT ALLOWANCE			(8) 1-YR ALW PER 100 EQUIP CNTGCV	(9) DEPOT MAINT ALW PER 100 EQUIP	(10) ILLUSTRATION		
					(a)	(b)	(c)	(a)	(b)	(c)			(a) FIGURE NO.	(b) ITEM NO.	
					1-20	21-50	51-100	1-20	21-50	51-100					
C	-P-O--	5310-934-9757	NUT, PLAIN, hex, steel, No. 8-32 UNC-2B MS35649-282 (96906)	ea	26	REF	REF	REF	REF	REF	REF	REF	8	2	
C	-P-O--	5305-901-2099	SCREW, WOOD, round hd, cross recess, pltd, No. 8 x 1/2 lg MS3549351 (96906)	ea	26	*	*	*	*	*	5	260	8	3	
N	-P-O--	5340-984-6466	CLAMP, CUSHIONED, SUPPORT, LOOP TYPE, AIRCRAFT, 1-3/8 dia MS21919DG22 (96906)	ea	26	*	*	*	*	*	5	260	8	4	
	-P-O--	4730-392-2975	PLUG AND SOCKET "Y" FITTING 1015Y56C (81895)	ea	1	*	*	*	*	*	5	10	8	5	
		GROUP 600 - REPAIR KIT													
C	-P-O--	5340-664-7907	LOOP CLAMP KIT (No Reference)	ea	-	3	8	14	*	*	*	150	-	8	
		1	ea	SCREW, MACH, pan hd, cross recess, stl, pltd, No. 8-32 UNC-2A x 1/2 lg MS35190-253 (96906)										8	1
		1	ea	NUT, PLAIN hex, stl No 8-32 UNC-2B MS35649-282 (96906)										8	2
		1	ea	SCREW, WOOD, round hd cross recess, pltd,, No. 8 x 1/2 lg MS35493-51 (96906)										8	3
		1	ea	CLAMP CUSHIONED. SUPPORT LOOP TYPE, AIRCRAFT 1-3/8 dia MS21919DG-22 (969065)										8	4



MU-E-552-35P-1

Figure 1. Filter Unit, Gas Particulate, M7A1.

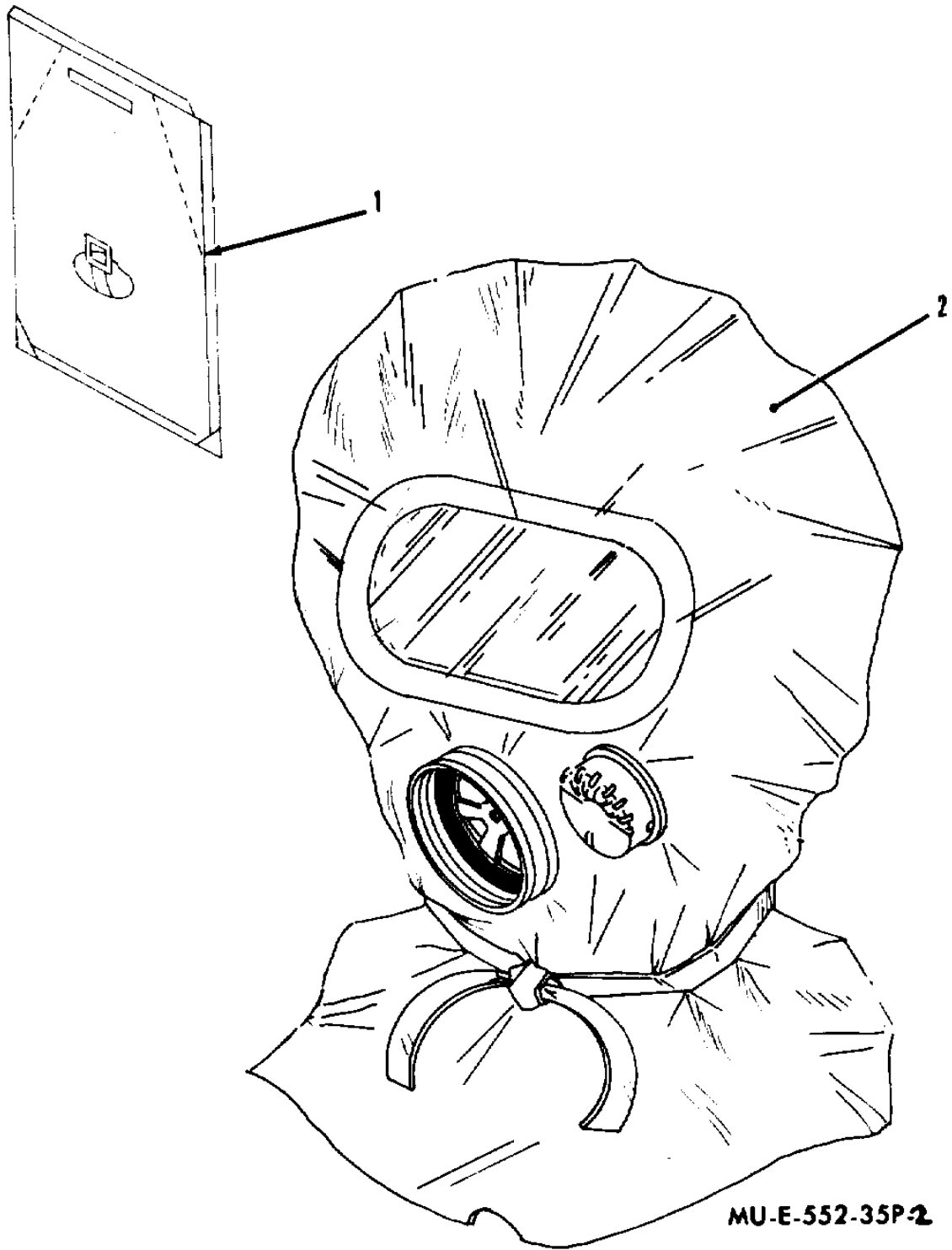
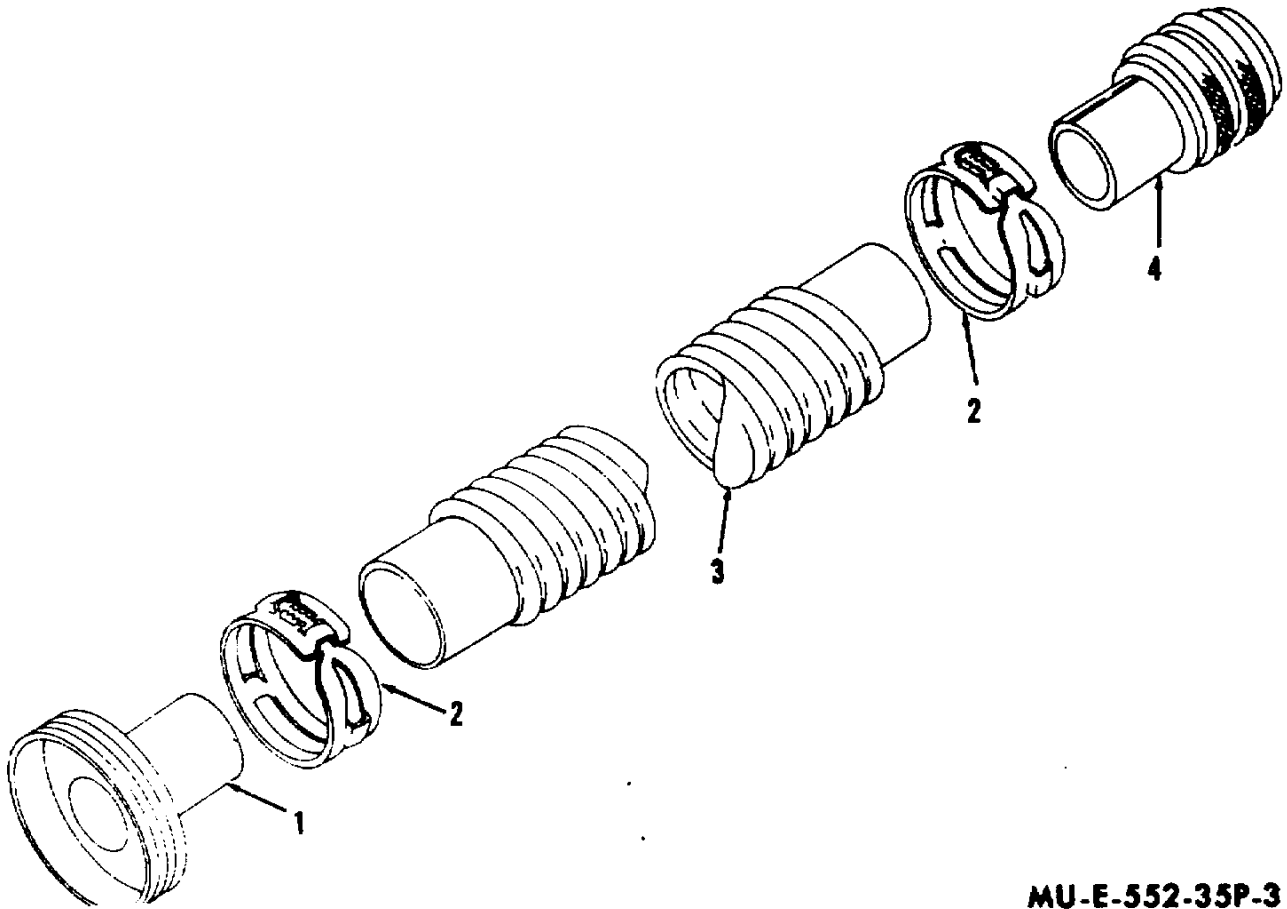
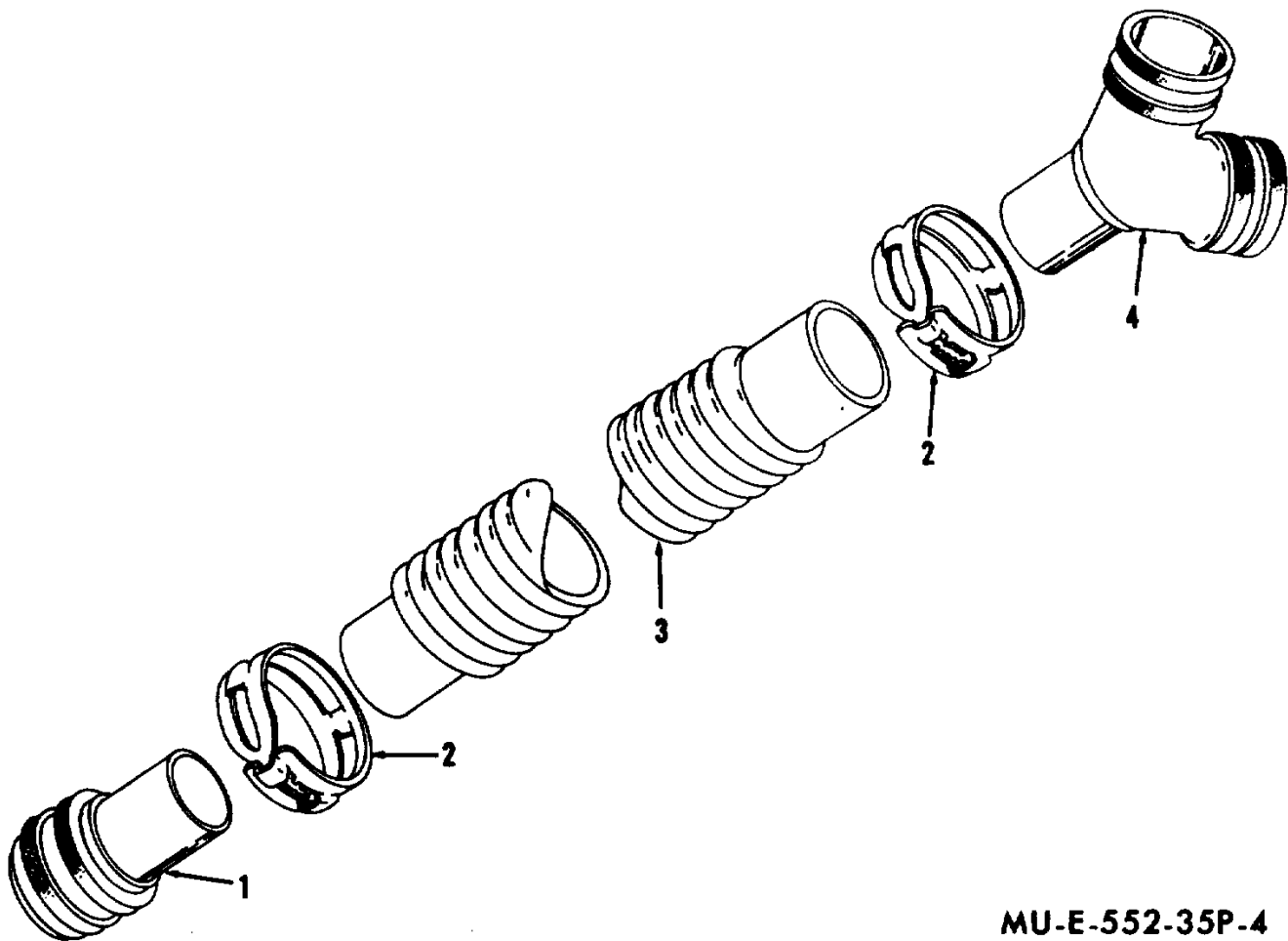


Figure 2. Headpiece.



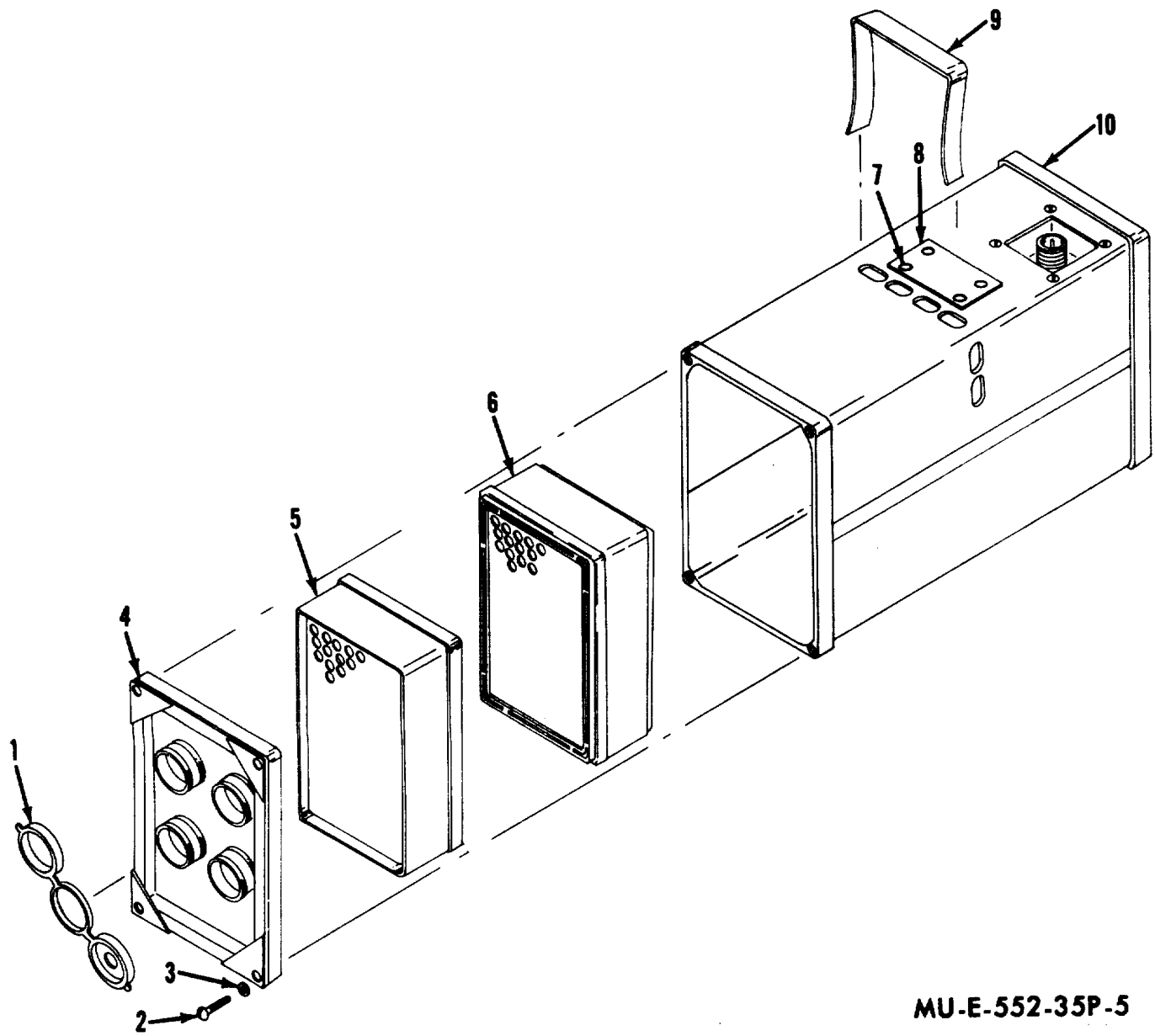
MU-E-552-35P-3

Figure 3. Hose assembly, size 2.



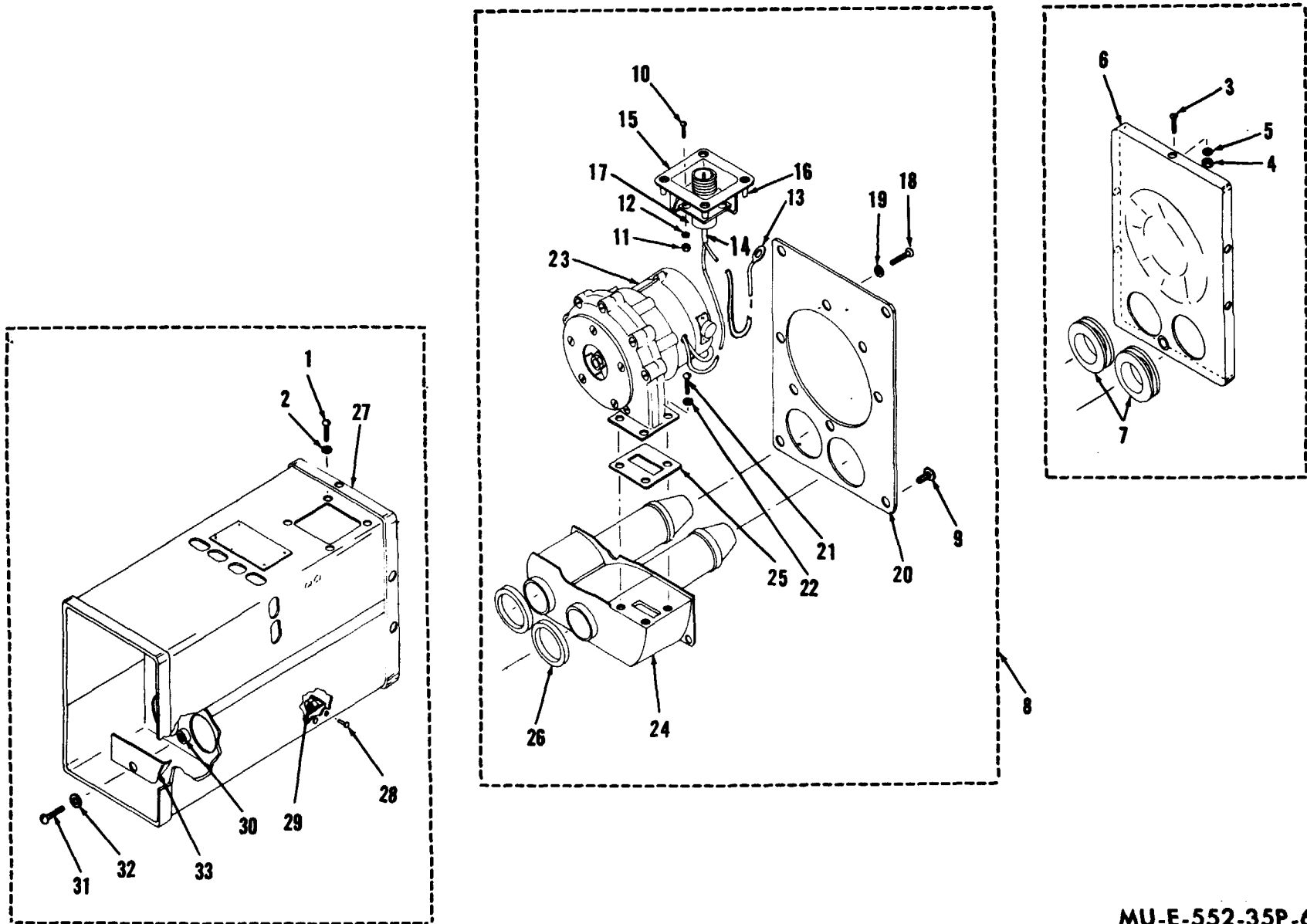
MU-E-552-35P-4

Figure 4. Hose assembly, size 3.



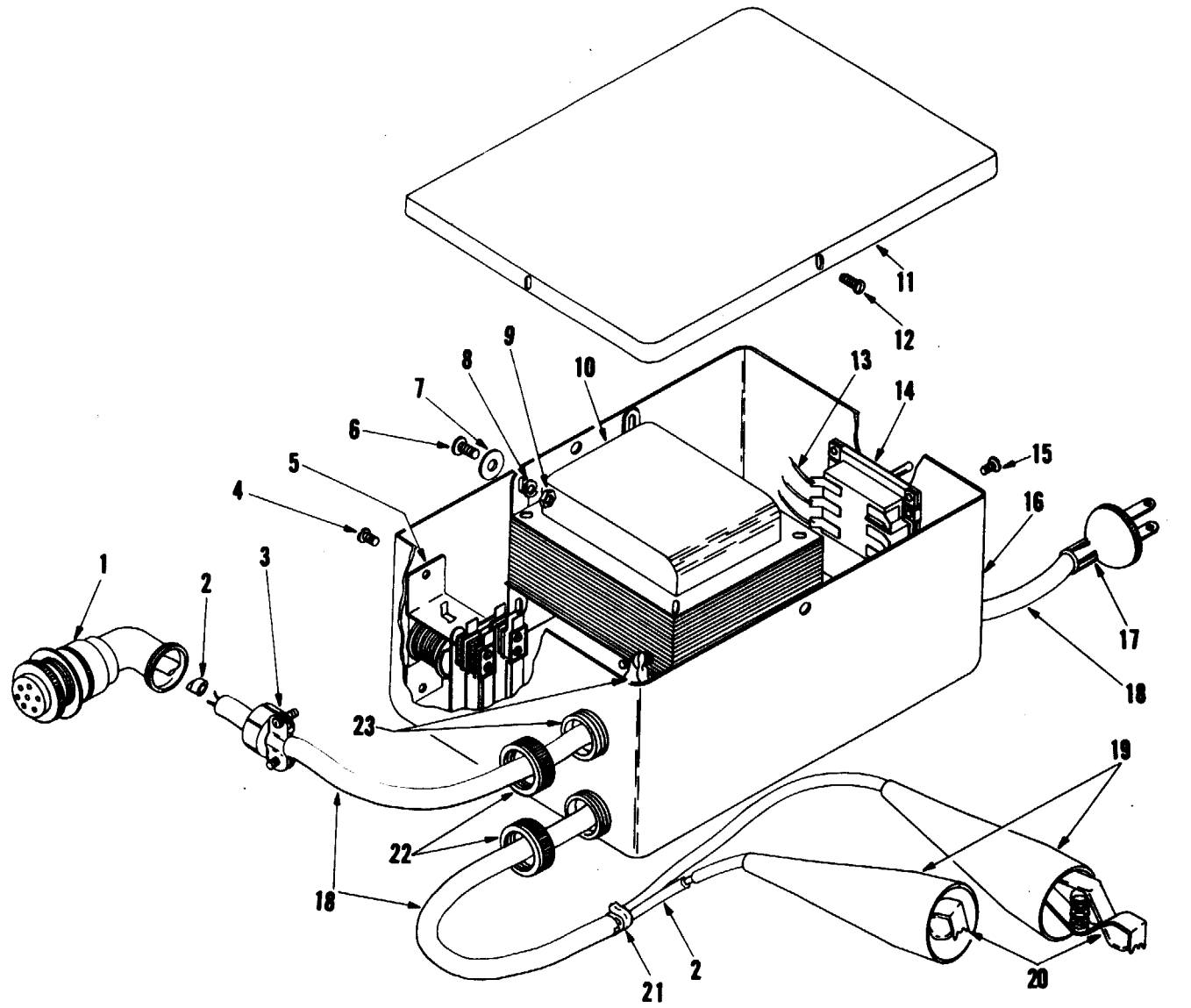
MU-E-552-35P-5

Figure 5. Air purifier assembly M2A2 and spring clip.



MU-E-552-35P-6

Figure 6. Precleaner and housing assembly



MU-E-552-35P-7

Figure 7. Transformer.

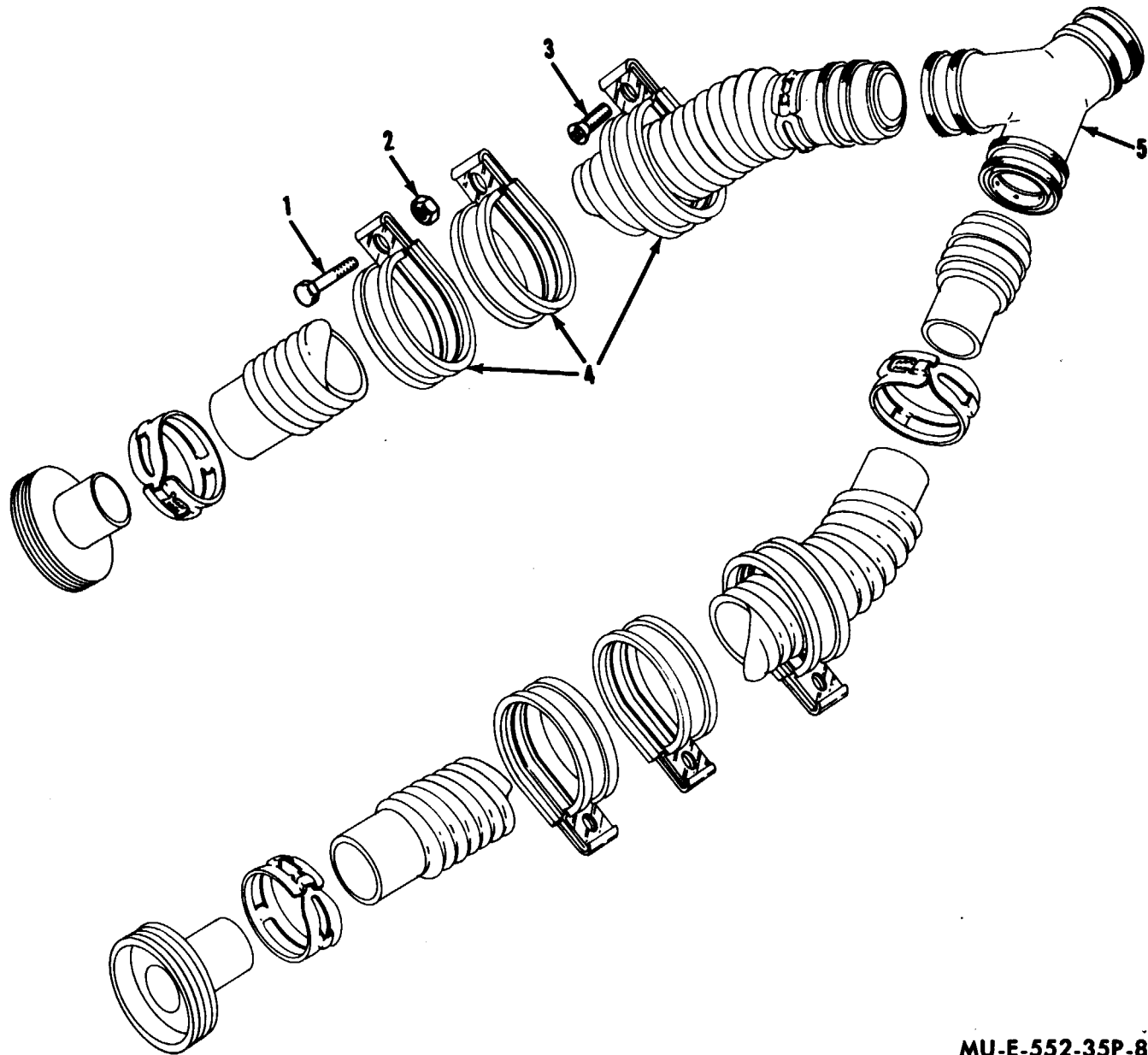


Figure 8. Accessories and repair kit.

MU-E-552-35P-8

**Section IV. INDEX - FEDERAL STOCK NUMBER AND REFERENCE NUMBER
CROSS-REFERENCE TO FIGURE AND ITEM NUMBER**

<u>Stock Number</u>	<u>Figure No.</u>	<u>Item No.</u>	<u>Stock Number</u>	<u>Figure No.</u>	<u>Item No.</u>
4240-018-3079	5	4	4730-554-7208	3 4	2 2
4240-203-3999	1	-	4730-886-9339	4	5
4240-289-7978	5	5	5305-012-1742	6	21
4240-300-5714	6	6	5305-017-1589	6	18
4240-300-5718	6	20	5305-059-4568	6 8	3 1
4240-319-5046	6	8	5305-879-3825	5	7
4240-368-6291	5	6	5305-889-2997	6	10
4240-368-6361	2	1	5305-889-3000	6 6	1 27
4240-391-0998	6	33	5305-901-2099	8	3
4240-395-2054	6	24	5305-984-4983	7	4
4240-510-0325	6	23	5305-984-4992	7	15
4240-763-2464	2	2	5305-984-6192	7	6
4240-763-2465	5	1	5305-984-6195	5	2
4240-806-0022	5	9	5305-989-7435	6	9
4240-807-6858	5	10	5305-990-6444	6	31
4720-279-0093	3	3	5305-993-1849	7	12
4720-279-0094	4	3	5310-045-3299	5 7	3 8
4730-392-2962	3	4	5310-063-5997	6	30
4730-392-2974	3 4	1 1	5310-209-0786	6	19
4730-392-2975	5				

**Section IV. INDEX - FEDERAL STOCK NUMBER AND REFERENCE NUMBER
CROSS-REFERENCE TO FIGURE AND ITEM NUMBER**

<u>Stock Number</u>	<u>Figure No.</u>	<u>Item No.</u>	<u>Stock Number</u>	<u>Figure No.</u>	<u>Item No.</u>
5310-209-0788	6	2	5935-988-3552	6	14
5310-596-7691	6	32	5940-204-8350	7	20
5310-596-7693	6	5	5940-689-8130	6	13
5310-616-3554	6	12	5945-321-9229	7	5
5310-809-8544	7	7	5950-338-6692	7	-
5310-821-6269	6	22	5950-646-1172	7	10
5310-834-4875	6	29	5970-188-5477	7	21
5310-934-9739	6	11	5970-556-2710	6	17
5310-934-9757	6	4	5975-152-1127	7	2
	7	9		7	23
	8	2		7	19
5320-582-3494	6	28	5975-281-0034	7	19
			5975-538-3136	7	22
5325-270-8890	6	7			
5330-290-9814	6	25	6145-174-1107	7	13
5330-543-3174	6	26	6145-643-0018	7	18
5340-664-7907	8	-			
5340-984-6466	8	4			
5930-655-1576	7	14			
5935-201-2503	7	1			
5935-240-0173	7	3			
5935-258-9010	7	17			

**Section IV. INDEX - FEDERAL STOCK NUMBER AND REFERENCE NUMBER
CROSS-REFERENCE TO FIGURE AND ITEM NUMBER**

Reference <u>No.</u>	Mfg <u>Code</u>	Fig <u>No.</u>	Item <u>No.</u>	Reference <u>No.</u>	Mfg <u>Code</u>	Fig <u>No.</u>	Item <u>No.</u>
A5-19-901	81361	6	26	D5-9-967	81361	6	24
A5-19-906	81361	6	25	D5-9-1772	81361	5	-
B5-19-867	81361	6	33	D5-9-1785	81361	5	10
B5-66-276	81361	7	10	D5-19-2258	81361	6	8
C5-19-853	81361	5	6	D5-19-2260	81361	6	23
C5-19-877	81361	6	20	D5-70-23	81361	2	2
C5-19-900	81361	6	15	E5-66-274	81361	7	-
C5-19-916	81361	3	3	FF-S-92	81348	6	21
		4	3				
				FF-S-107	81348	6	18
C5-19-933	81361	6	6				
				MIL-C-3432	81349	7	
C5-19-1662	81361	5	9				
				MIL-C-2046	81349	7	18
C5-19-1773	81361	5	4				
				MIL-F-14452	81349	1	-
C5-19-1775-1	81361	5	8				
				MIL-1-631	81349	6	17
C5-19-1827	81361	5	1			7	2
C5-19-2267	81361	5	5	MIL-T-7798	81349	7	21
C5-66-230	81361	4	-	MS3057-4A	96906	7	3
C5-66-232	81361	3	4	MS3102R12-5P	96906	6	14
C5-66-269	81361	3	-	MS20600AD-4	96906	6	28
D5-4-1002	81361	2	1	MS20659-39	96906	6	13
D5-9-881	81361	6	27	MS21919DG22	96906	8	4

**Section IV. INDEX - FEDERAL STOCK NUMBER AND REFERENCE NUMBER
CROSS-REFERENCE TO FIGURE AND ITEM NUMBER**

Reference <u>No.</u>	Mfg <u>Code</u>	Fig <u>No.</u>	Item <u>No.</u>	Reference <u>No.</u>	Mfg <u>Code</u>	Fig <u>No.</u>	Item <u>No.</u>
MS24617-1	96906	5	7	MS35338-42	96906	5 7	3 8
MS25105-24	96906	7	14	MS35489-22	96906	6	7
MS27130-19K	96906	6	30	MS35493-51	96906	8	3
MS27183-7	96906	7	7	MS35649-242	96906	6	11
MS35190-253	96906	6 8	3 1	MS35649-282	96906	6 7	4 9
MS35206-215	96906	6	10			8	2
MS35206-226	96906	7	4	MS5935-02	08288	7	1
MS35206-230	96906	6	1	MSS5975-10	08288	7	23
MS35206-232	96906	7	15	MSS5975-19	08288	7	22
MS35206-244	96906	7	6	NAS397-20	80205	3 4	2 2
MS35206-247	96906	5	2	NAS1033N3	80205	6	29
MS35207-259	96906	7	12	S6-106	25472	6	16
MS35207-261	96906	6	31	W-C-440	81348	7	20
MS35207-264	96906	6	9	26	76545	7	19
MS35334-19	96906	6	22	56AT	95138	3	1
MS35335-29	96906	6	12			4	1
MS35335-30	96906	6	2	1015YHS12C	81895	4	5
MS35335-31	96906	6	5	1015Y56C	81895	8	5
MS35335-32	96906	6	32	2100	82415	7	5
MS35335-33	96906	6	19	9940	83315	7	17

By Order of the Secretary of the Army:

W. C. WESTMORELAND,
General, United States Army,
Chief of Staff.

Official:

KENNETH G. WICKHAM
Major General, United States Army,
The Adjutant General.

Distribution:

Active Army:

CNGB (1)	USAMUCOM (5)
USAMB (2)	USAMC (5)
USACDC (2)	USACDCEC (10)
USACDCCBRA (2)	POE (1)
USACDCADA (2)	Instl (2)
USACDCARMA (2)	USATTC (1)
USACDCFAA (2)	MOTBA (1)
USACDCAVNA (2)	MOTBY (1)
USACDCIA (2)	MOTKI (1)
USAARMC (2)	MOTSU (1)
USAFACFS (2)	USAAPSA (5)
USAE Cen (2)	Arsenals (3) except
USAPC (2)	Edgewood (50)
USA GM Cen (2)	PG (5)
USAIC (2)	Units org under fol TOE:
USCONARC (10)	(2 copies each)
ARADCOM (5)	3-7
ARADCOM Rgn (5)	3-32
OS Maj Comd (5)	3-36
Armies (5)	3-47
Corps (3)	3-147
Div (3)	3-500 (AA-AC)
Regt Bde (2)	29-1
Bn (2)	29-11
Co (2)	29-16
USMA (10)	29-21
Svc Colleges (10)	29-35
Br Svc Sch (10) except	29-36
USACMLCS (50)	29-52
Gen Dep (5)	29-75
Dep (5)	29-138
A Dep (5)	29-500


NG: None.

USAR: None.

For explanation of abbreviations used, see AR 310-50.

☆U.S. GOVERNMENT PRINTING OFFICE: 1969-390997/543

RECOMMENDED CHANGES TO EQUIPMENT TECHNICAL PUBLICATIONS

 <p style="font-size: small; margin: 0;"><i>THEN...JOT DOWN THE DOPE ABOUT IT ON THIS FORM. CAREFULLY TEAR IT OUT, FOLD IT AND DROP IT IN THE MAIL.</i></p>		SOMETHING WRONG WITH PUBLICATION	
		FROM: (PRINT YOUR UNIT'S COMPLETE ADDRESS)	
		DATE SENT	
PUBLICATION NUMBER		PUBLICATION DATE	PUBLICATION TITLE
IN THIS SPACE, TELL WHAT IS WRONG AND WHAT SHOULD BE DONE ABOUT IT.			
BE EXACT PIN-POINT WHERE IT IS			
PAGE NO.	PARA-GRAPH	FIGURE NO.	TABLE NO.
PRINTED NAME, GRADE OR TITLE AND TELEPHONE NUMBER		SIGN HERE	

The Metric System and Equivalents

Linear Measure

1 centimeter = 10 millimeters = .39 inch
 1 decimeter = 10 centimeters = 3.94 inches
 1 meter = 10 decimeters = 39.37 inches
 1 dekameter = 10 meters = 32.8 feet
 1 hectometer = 10 dekameters = 328.08 feet
 1 kilometer = 10 hectometers = 3,280.8 feet

Weights

1 centigram = 10 milligrams = .15 grain
 1 decigram = 10 centigrams = 1.54 grains
 1 gram = 10 decigrams = .035 ounce
 1 decagram = 10 grams = .35 ounce
 1 hectogram = 10 decagrams = 3.52 ounces
 1 kilogram = 10 hectograms = 2.2 pounds
 1 quintal = 100 kilograms = 220.46 pounds
 1 metric ton = 10 quintals = 1.1 short tons

Liquid Measure

1 centiliter = 10 milliliters = .34 fl. ounce
 1 deciliter = 10 centiliters = 3.38 fl. ounces
 1 liter = 10 deciliters = 33.81 fl. ounces
 1 dekaliter = 10 liters = 2.64 gallons
 1 hectoliter = 10 dekaliters = 26.42 gallons
 1 kiloliter = 10 hectoliters = 264.18 gallons

Square Measure

1 sq. centimeter = 100 sq. millimeters = .155 sq. inch
 1 sq. decimeter = 100 sq. centimeters = 15.5 sq. inches
 1 sq. meter (centare) = 100 sq. decimeters = 10.76 sq. feet
 1 sq. dekameter (are) = 100 sq. meters = 1,076.4 sq. feet
 1 sq. hectometer (hectare) = 100 sq. dekameters = 2.47 acres
 1 sq. kilometer = 100 sq. hectometers = .386 sq. mile

Cubic Measure

1 cu. centimeter = 1000 cu. millimeters = .06 cu. inch
 1 cu. decimeter = 1000 cu. centimeters = 61.02 cu. inches
 1 cu. meter = 1000 cu. decimeters = 35.31 cu. feet

Approximate Conversion Factors

<i>To change</i>	<i>To</i>	<i>Multiply by</i>	<i>To change</i>	<i>To</i>	<i>Multiply by</i>
inches	centimeters	2.540	ounce-inches	Newton-meters	.007062
feet	meters	.305	centimeters	inches	.394
yards	meters	.914	meters	feet	3.280
miles	kilometers	1.609	meters	yards	1.094
square inches	square centimeters	6.451	kilometers	miles	.621
square feet	square meters	.093	square centimeters	square inches	.155
square yards	square meters	.836	square meters	square feet	10.764
square miles	square kilometers	2.590	square meters	square yards	1.196
acres	square hectometers	.405	square kilometers	square miles	.386
cubic feet	cubic meters	.028	square hectometers	acres	2.471
cubic yards	cubic meters	.765	cubic meters	cubic feet	35.315
fluid ounces	milliliters	29.573	cubic meters	cubic yards	1.308
pints	liters	.473	milliliters	fluid ounces	.034
quarts	liters	.946	liters	pints	2.113
gallons	liters	3.785	liters	quarts	1.057
ounces	grams	28.349	liters	gallons	.264
pounds	kilograms	.454	grams	ounces	.035
short tons	metric tons	.907	kilograms	pounds	2.205
pound-feet	Newton-meters	1.356	metric tons	short tons	1.102
pound-inches	Newton-meters	.11296			

Temperature (Exact)

°F	Fahrenheit temperature	5/9 (after subtracting 32)	Celsius temperature	°C
----	---------------------------	-------------------------------	------------------------	----

